

Beaver Valley Headwaters Preserve 2024-2025 Burn Report



PREPARED BY:

Scott River Watershed Council

514 N Hwy 3 | PO Box 355

Etna, CA 9602



Acknowledgements

The Scott River Watershed Council (SRWC) would like to extend its gratitude to all the partners who participated in burning operations on Beaver Valley Headwaters Preserve (BVHP) during the 2024/25 pile burning season and especially to The Wildlands Conservancy for collaboration of restoration efforts in the Scott River watershed. Partners that contributed to burning operations include Mid-Klamath Watershed Council, Shasta Valley RCD, Quartz Valley Indian Reservation, Cross Contour LLC, Salmon River Restoration Council, US Fish and Wildlife Service, Lomakatsi and UC ANR.



Figure 1. Aerial image of unit 5 during burning operations

Contents

Overview.....	3
Maps.....	6
Burn Plan.....	9
Permits.....	22
Landowner Access Agreement	39

Overview

Between the dates of 11-15-2024 and 2-25-2025 SRWC, in collaboration with partner organizations, completed burning operations on approximately 106.5 acres on BVHP. Areas where burning was completed are shown in Map 1. All burning was done in accordance with the burn plan that can be found starting on page 9 and under the supervision of a burn boss. Lomakatsi designated areas to be treated and prepared a burn plan for the units. Lomakatsi hand crews cut and piled the units in 2023 that were burned in the 2024/2025 burn season. All piles were covered with plastic material which enabled burning to occur in wetter conditions throughout the fall and winter months.

Areas planned to be burned during the 2025/26 season are shown in Map 2. These units total approximately 96.6 acres. Areas to be burned next season were cut and piled in the fall of 2024 by Lomakatsi crews. A new burn plan will be developed before the next burn season.

Another project being planned by SRWC will build upon the areas treated in this project and also connect with treatments on adjacent Forest Service property. The East Fork Scott River Forest Health Implementation Project will treat an additional 263 acres in Noyes Valley, on Hayden Ridge and along Hwy 3. Areas planned to be treated in this project are shown on Map 3.



Figure 2. Shows an area in Unit #1 before, during and after burning operations

Burning was conducted in wetter conditions to reduce the chance of fire creeping in duff layers. Where duff layers were deep crews worked to minimize spread and extinguish fuels engaged outside of burn piles. In some cases, piles were constructed on top of heavy downed fuels and stumps increasing the amount of work for burning crews and the possibility of fire engaging with these fuels.



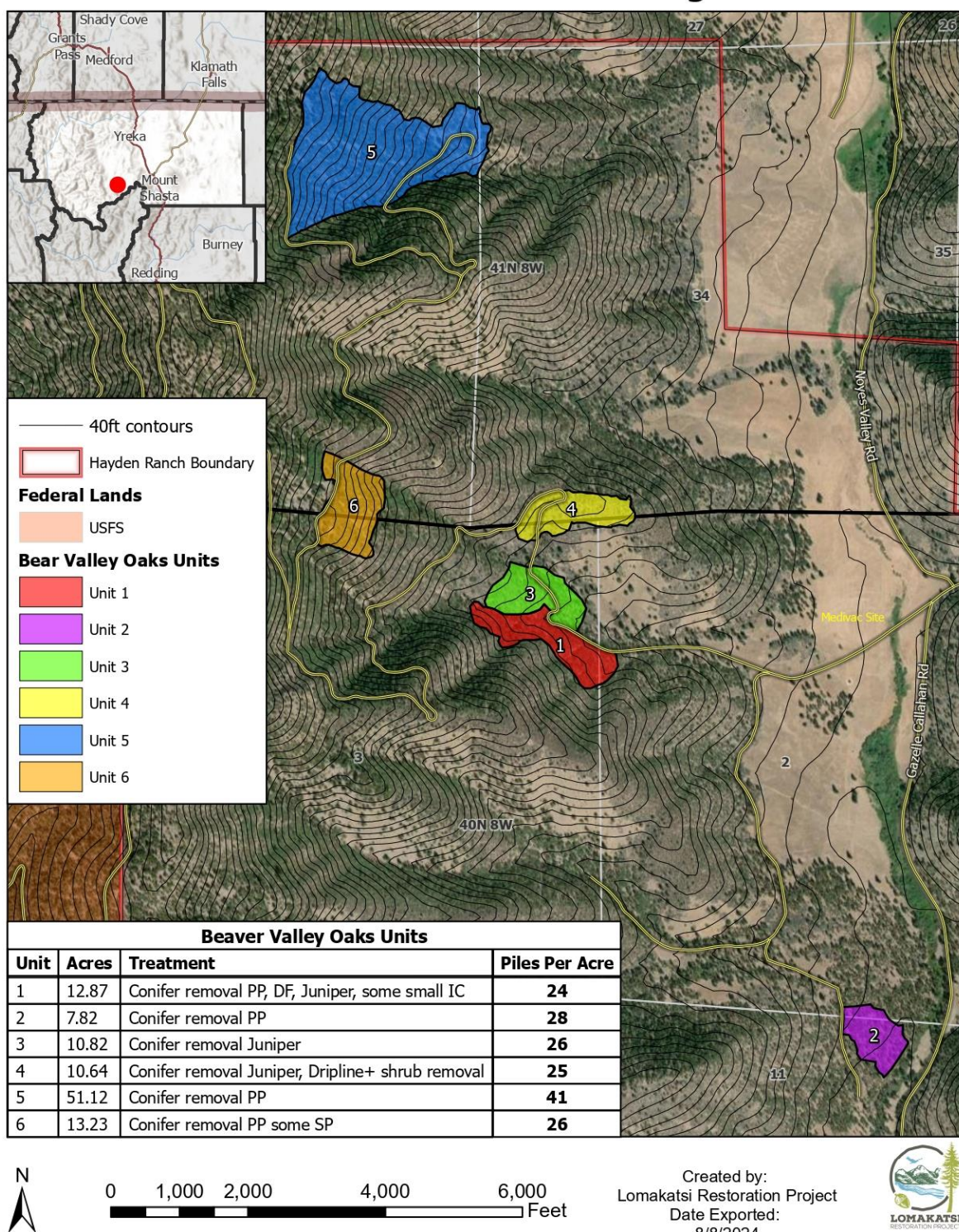
Figure 3. Staff from Shasta Valley RCD and Cross Contour LLC work to extinguish heavy fuels.



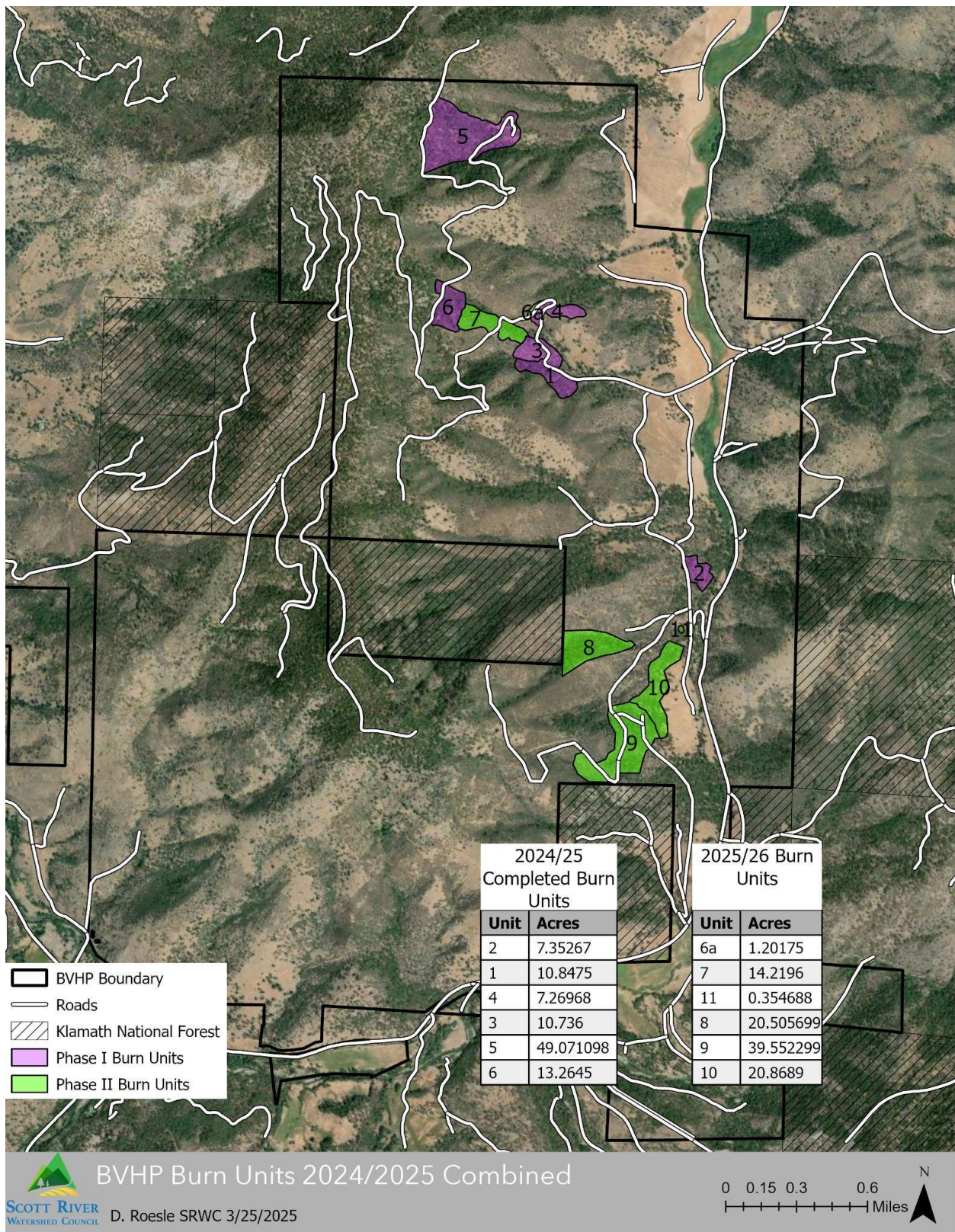
Figure 4. SRWC staff lighting piles in unit #5

Maps

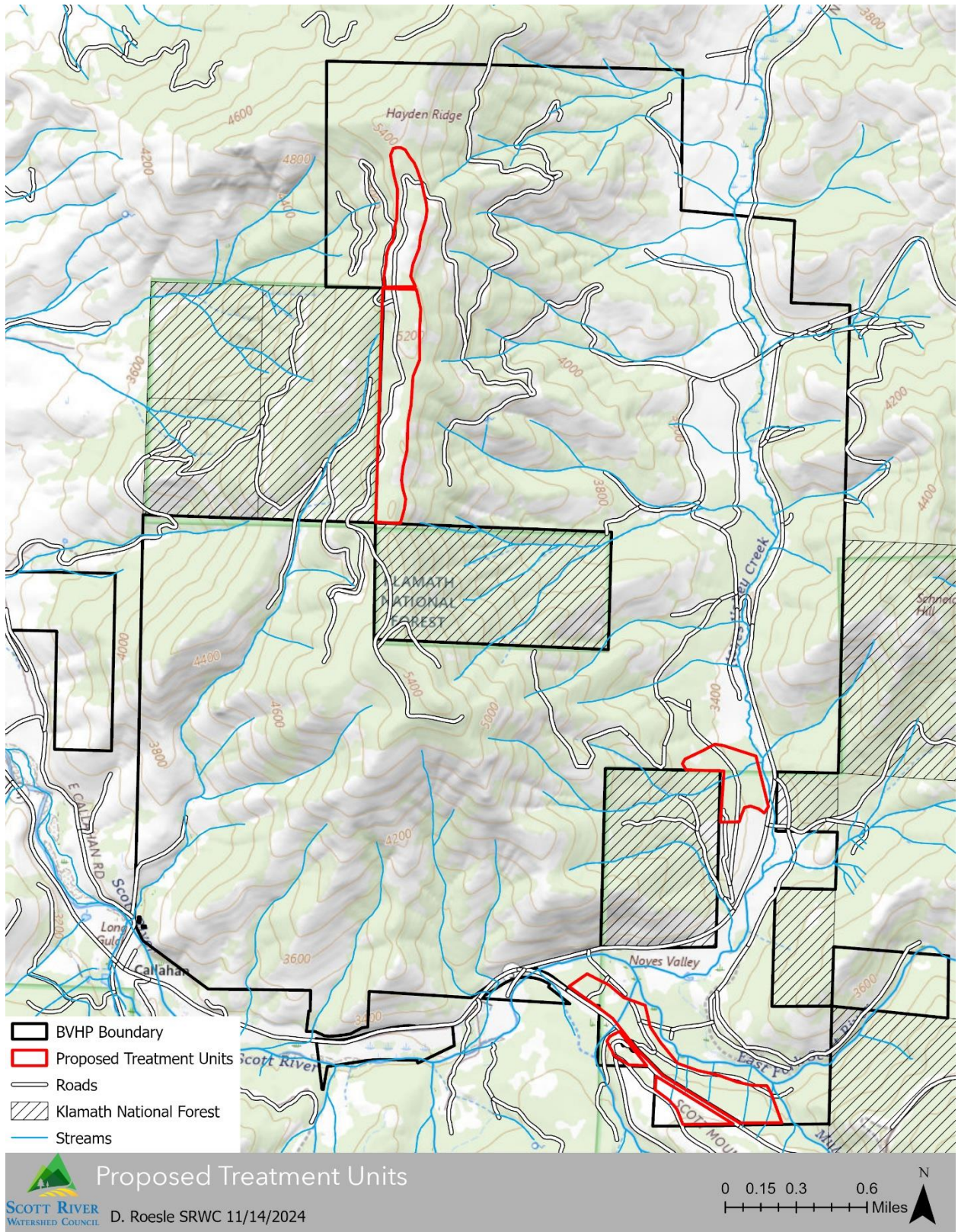
BVHP Hand Pile Burning 2024



Map 1. Shows burn units that were completed in the fall and winter of 2024/2025



Map 2. Shows units completed in 2024/25 season and units to be completed in 2025/26



Map 3. Shows treatments planned to occur in 2025/26

Burn Plan

California Standardized Prescribed Fire Plan

Project Title:

Beaver Valley Headwaters Preserve (BVHP) Oak Habitat Restoration Project

Prescribed Fire Burn Boss (CARX): Sam Commarto: Cross Contour, LLC

Author of Plan: Sean Voorhes: Fire Operations Manager, Lomakatsi Restoration Project

Agency Having Jurisdiction (AHJ): CalFire- SKU Siskiyou Unit, Jake Burgess (Batt. Chief)

Property Owner: The Wildlands Conservancy

Date Created: 8-8-24 Date Re-Evaluated* : 8/28/2024 by CARX Sam Commarto

**Burn plans should be re-evaluated as needed to account for changes in fuel/site conditions or project objectives.*

1. Project Area Description

Location Description: Project area is located approximately 4 miles NNW of the community of Callahan, CA in the Noyes Valley. It is immediately west of the Gazelle Callahan Rd. and Noyes Valley Rd. junction. Units are generally situated on eastern facing slopes. All units are directly accessed by road infrastructure. Cutting of piled material was completed in Spring and Fall of 2023, and all slashed fuels are adequately covered and seasoned.

Legal Description: T 40N, R 8W, Section(s) 2 & 3 _ T 41N, R 8W, Section(s) 33 & 34

Elevation: Units 1, 2, 3 and 4 are lower elevation, and range from 3730' to 4050', Units 5 and 6 are at a higher elevation. Unit 6 ranges from 4400' to 4700' and Unit 5 ranges from 4130 to 4830.

Latitude and longitude (*in Degrees Decimal Minutes (DMM)*): See Lat/Lon for each unit below in *unit description*.

Property Ownership (private, state, etc.): Private

Unit Size (acres): 106.5 acres: Comprised of 6 units totaling 106.5 acres; see below.

Unit Description(s): All units have good road access to the perimeter or dissecting through the unit(s). The project area varies between mixed hardwood stands, and open oak woodlands. Very high mortality rates exist (snags) in the conifer component of the

represented fuels. The project area is punctuated by moderate to large natural openings. Project area is moderately sloped.

Unit Tables

BVHP Unit 1 (12.8 ac)	Within Unit	Adjacent to Unit
Fuel Model/Type	TL2	TL5
Slope	5-45%	Same
Aspect	NNE	Same
Lat/Lon (Center of Unit)	41°20.900'N 122°45.930'W	Elev. 3834'
Special Features	<p>Piled material was cut in April 2023. Ponderosa pine was thinned the most aggressively, followed by Douglas-fir, Juniper, and some encroaching buckbrush. Conifers were thinned up to 8" dbh and up to 10" dbh.. Junipers were thinned up to 20" dbh. There was some limited oak on oak thinning.</p> <p>Low to moderate pile density consisting of <u>24 Piles Per Acre on average</u>. There is an oak and pine overstory on the unit. There is a thick duff layer of pine and oak litter that could present creeping challenges during pile burning. Easily accessible roadside unit.</p>	

BVHP Unit 2 (7.8 ac)	Within Unit	Adjacent to Unit
Fuel Model/Type	TL2	TL5
Slope	0-15%	Same
Aspect	SE	Same
Lat/Lon (Center of Unit)	41°20.195'N 122°45.149'W	Elev. 3476'
Special Features	<p>Piled material was cut in November 2023, consisting mostly of ponderosa pine, thinned up to 8" dbh and up to 10" dbh. Junipers were selectively thinned up to 20" dbh.</p> <p>Low to moderate pile density consisting of <u>28 Piles Per Acre on average</u>. Piled fuels consist of mostly ponderosa pine and some buckbrush. Very flat, roadside unit, although lower road can be difficult to cross during wet season.</p>	

BVHP Unit 3 (10.8 ac)	Within Unit	Adjacent to Unit
Fuel Model/Type	TL2	TL5
Slope	5-20%	Same
Aspect	ESE	Same
Lat/Lon (Center of Unit)	41°20.942'N 122°45.938'W	Elev. 3866'

Special Features	Piled material was cut in November 2023. Low to moderate pile density consisting of <u>26 Piles Per Acre on average</u> . Adjacent to Unit 1 and access road divides unit into east and west sections. Can be burned at same time as Unit 1. Notable difference very Unit 1 is less slope and piled fuels consist mostly of thinned Juniper, in addition to a small area of cut ponderosa pine and suppressed white oak, as well as buckbrush. Some piles consisting of large buckbrush may require more chunking to meet objectives.
-------------------------	---

BVHP Unit 4 (10.6 ac)	Within Unit	Adjacent to Unit
Fuel Model/Type	TL2	TL5
Slope	0-30%	Same
Aspect	ESE	Same
Lat/Lon (Center of Unit)	41°21.113'N 122°45.859'W	Elev. 3999'
Special Features	Piled material was cut in November 2023, consisting primarily of large Juniper and encroaching buckbrush. Large Juniper boles remain un-piled. Some buckbrush piles will need extra chunking in because of their size and airy pockets. There is an oak and pine overstory on the unit. There is a thick duff layer of pine and oak litter that could present creeping challenges during pile burning. Road access is good and low to moderate pile density consisting of <u>25 Piles Per Acre on average</u> .	

BVHP Unit 5 (51.1 ac)	Within Unit	Adjacent to Unit
Fuel Model/Type	TL2	TL5
Slope	5-50%	Same
Aspect	E	Same
Lat/Lon (Center of Unit)	41°21.752'N 122°46.379'W	Elev. 4574'
Special Features	<p>Piled material was cut in November 2023. Pile density is higher than other units (41 Piles per acre). Ponderosa pine was thinned the most aggressively, followed by Douglas-fir, Juniper, and some encroaching buckbrush. Conifers were thinned up to 8" dbh and up to 10" dbh. Junipers were thinned up to 20" dbh. There was some limited oak on oak thinning.</p> <p>The road is likely to be inaccessible during parts of the burn season due to snow levels and heavier rains. It is strongly recommended to burn this on the drier end of the prescription with more holding resources available to control spread. Mop up and patrol should be planned in advance to monitor post-burn conditions.</p>	

--	--

BVHP Unit 6 (13.2 ac)	Within Unit	Adjacent to Unit
Fuel Model/Type	TL2	TL5
Slope	10-50%	
Aspect	ESE	
Lat/Lon (Center of Unit)	41°21.107'N 122°46.382'W Elev. 4556'	
Special Features	<p>Piled material was cut in November 2023, and there are 26 piles per acre, on average.</p> <p>Ponderosa pine was thinned the most aggressively, followed by Douglas-fir, Juniper, and some encroaching buckbrush. Conifers were thinned up to 8" dbh and up to 10" dbh. Junipers were thinned up to 20" dbh.</p> <p>There are 2 springs within the unit. The road may have accessibility issues (from the top of the unit) but it is possible to walk in from the bottom of the unit, although it is steeper than other unit areas</p>	

Prescribed fire goals and objectives *(include overarching project goals as well as specific project objectives. Objectives should be S.M.A.R.T. (specific, measurable, attainable, relevant, time-bound))*:

Prescribed Fire Goals:

Ecological Goals: The main goal of this treatment is to promote oak habitat restoration. This project will also reduce surface and ladder fuels to minimize the potential for stand replacing fire, improve the health and vigor of larger trees, promote biodiversity and forest health, enhance and promote wildlife habitat and protect property values and natural resources. The prescribed burning planned for implementation with this plan is aimed to maintain these ecological thinning treatments and further these restoration objectives.

Community Goals: Maximize training opportunities for participants from diverse fire backgrounds and to demonstrate the ability of the local Scott Valley community to implement prescribed burns safely on private lands.

Implementation of this project will also assist in building the capacity of the Scott River Watershed Council, Quartz Valley Indian Reservation, and the Siskiyou Prescribed Burn Association (SPBA).

The SPBA will collaborate with partners including CAL FIRE, Scott Valley Fire, and more.

Prescribed Fire Objectives:

- Minimize exposure and impacts to the public from overall burn operations.
- Minimize smoke impacts to local residents, community of Callahan and surrounding rural communities.
- Dispose of thinned fuels through controlled ignitions of covered hand piles.
- Consumption 75-95% of all piled material by rolling in and chunking piles (as needed) while there is enough active combustion to ignite piled fuels.
- Burning of piled fuels will moderate Fuel Models from TL3 to a TL1 to reduce future predicted flame lengths and rates of spread.
- To reduce hazardous fuel loadings in tons per acre that discourage high complexity fire behavior such as ladder fuels connected to the canopy.
- To reintroduce beneficial fire for ecological restoration while protecting wildlife habitat values and water sources.
- Minimize residual damage to the live vegetation and large oak snags retained during the understory thinning.
- Protect legacy oaks with cavities that have wildlife habitat value from embers.
- Retain approximately 80% large down logs or snags (>20" diameter).

2. Pre-burn Considerations

Plan for unit preparation (describe line type/construction, pre-treatment of fuels, pre-burn land management considerations (e.g., grazing deferment), etc.):

1. **On-site:**

- Perform test fire to establish baseline fire behavior characteristics, including spread potential and consumption rates.
- Establish or refresh control lines around sensitive features and safety hazards where needed.
- Establish signage or personnel to perform traffic control on roads and trails as needed.

2. **Off-site:**

- Prescribed fire signage will be established at critical road junctions and along major travel routes where smoke may create a traffic hazard or other concern to the public.
- Before implementing the prescribed fire, the responsible dispatch office will receive a notification call of ignition operations beginning and ending time frames.
- Notification of burn operations to applicable agency, cooperators, partners and adjacent landowners will be made prior to test fire. Public, social media and/or media notifications shall be completed prior to the day of ignitions. Local air quality agency notified if applicable.
- Request Spot Wx Forecast from regional National Weather Service Office in Medford.
- Obtain burn clearance with CalFire SKU Siskiyou Unit.
- Obtain all permits to burn.
- Register project to the Prescribed Fire Claims Fund Pilot Program.

Water supply (describe quantity, location, and other considerations):

*Recommended to have (1) Type 6 Engine (4x4) with 300 Gallon capacity on site, especially when burning units on drier end of prescription (Unit 5).
Water sources are limited- Consider having a fold-a-tank on site if burning on upper end of RX with a compliment of hose and hardware to support water handling efforts.
Engine fill at USFS KNF Callahan Station- Call for availability (5 miles one way)
East Fork Scott River Bridge- possible drafting site or pump from water source to engines tank (3.4 miles to the junction of Callahan Gazelle Rd. & Hwy 3). Should scout before ignitions.

Unit access (describe roads, signage needs, etc.):

From Callahan, CA take Hwy 3 east approximately 1.9 miles to the Hwy 3, Gazelle Callahan Rd. junction. Take a left on Gazelle Callahan Rd.
Follow Gazelle Callahan Rd. for approximately 3.5 miles to 3497 Gazelle Callahan Rd. Take a left onto the dirt road across cattle guard, this is the main access road for all the units.
Signs will be posted at the bottom of the road on Gazelle Callahan Rd.

The road systems accessing the units are good. Main road system either dissects and/or borders at least one side of any given unit. Roads accessing the higher elevation, steeper units, 5 & 6, will need to be monitored for weather impacts.
Consideration: Burn these units early in the fall pile burn window before roads are impacted by precipitation and snow, especially Unit 5. Unit 6 can be accessed by foot from a ridgeline.

Plan to protect values at risk (if applicable; e.g., structures, water lines, sensitive species, cultural sites, etc.):

There are no major values at risk as the closest structures are approximately 2 miles to the east off Gazelle Callahan Rd. and 3 miles to the NNE off Noyes Valley Rd.

There are a couple springs located in unit 5, identify during briefing prior to ignitions.

Monitor and protect legacy oaks, especially ones that are susceptible to embers entering into cavities that are extremely difficult to extinguish.

In general, burn piles in a manner that will not cause mortality to oak habitat that this project is designed to restore.

3. Prescription

Environmental

Element	Desired
Temperature (F)	<80
Relative Humidity (%)	>40%
Mid-Flame Wind Speed* (mph)	<5mph sustained
1-hr fuel moisture (%)	>11
Probability of Ignition (%)	<50%

**If conditions are near or outside of any individual prescription parameter above, closely monitor fire behavior prescription below to determine whether to continue ignitions, hold firing and monitor, cease firing, or suppress.*

Fire Behavior

Rate of Spread	Fire shall not creep beyond the “heat bubble” of each pile. If fire is creeping beyond this radiant heat bubble, hold firing and assess.
Other characteristics	If any moderate to extreme fire behavior is observed, including surface fire spread, passive crown fire, spotting, etc., hold ignitions and re-assess the situation.

Wind direction (acceptable range and optimal): Any range is acceptable. Optimal is West for dispersal and sheltering.

Seasonality of burn (if applicable; in many cases, implementation will be appropriate at any time that prescription parameters are met): Ignitions should generally occur when the weather forecast shows an extended cool or wet trend during the late fall, winter, or early spring. Low atmospheric pressure is preferred for desired smoke lift and dispersal. The work will be accomplished **during cool and wet weather conditions**

4. Smoke Management Plan (SMP)

(to be prepared according to local air district rules; refer to SMP for detailed plan):

x Submitted through PFIRS

☐ Submitted in hard copy to air district

☐ Not required by air district based on project size/emissions

5. Ignition Plan

Note: test fire will be conducted in a location that is representative of the burn unit. Location to be determined by Burn Boss on the day of burn based on environmental conditions.

Firing plan (describe sequence, patterns, techniques, and devices needed to meet objectives):

Test Fire: A test fire will first be initiated to determine fire behavior, smoke dispersal, and consumption of fuels.

Firing Methods:

Burn boss will determine firing sequence and patterns based on number of resources, unit planned to be burned, and other logistical factors. Firing will likely begin at the top of each unit and progress downslope. Additional resources will monitor piles and “chunk” unburned fuels as piles burn down.

Firing Devices:

Hand ignition with drip torches will be the primary ignition source. Backpack propane torches may also be used.

Holding plan

☐ Holding Specialist to be designated

During and following ignitions of piles, the holding group's main objective will be to monitor fire behavior for any containment concerns and to "chunk in" piles as they burn down.

Pile burn footprint:

Once piles have consumed to the level that is safe from radiant heat for personnel to utilize hand tools for turning in piles, any un-burned circumference of piles might need to be "chunked" in while pile areas still have hot enough coals to ignite and consume material.

95% of the piles should have at least 85-95% of the fuel consumed.

Mobile patrol throughout the unit during and post ignition is essential. Patrol behind pile burners for "chunking in" of ignited piles. Any adjacent fuels ignited must be 100% mopped up as soon and safely possible. Keep creeping to a minimum.

Special Holding Feature(s):

During ignition of piles along the Unit 5 northern boundary, patrol the north boundary of the unit to ensure there is no chance of fire spread out of the unit and beyond the property boundary.

Resources (describe total number and type of resources needed to implement burn safely, based on production rates outlined above. Include description of plan for on-site weather observations and weather forecasting):

Positions *Or equivalent experience based on burn complexity as assigned by RXB3	ICS Code or Position Description	Amount Needed	Line Production Rate(s) (Ch/Hr)
Prescribed Fire Burn Boss Function	CARX or RXB3	1	0
Holding Boss	FFT1 or higher	1	1
Engine Boss, Operator, and Crew	ENGB	Per burn boss	12
Ignition Crew	FFT2	3 -5	3-5
Holding Crew	FFT2	3-5	3-5

- Weather observations will be taken every hour on the hour utilizing a Belt Weather Kit and/or Kestrel digital weather instrument.
- Weather data will be recorded and attached to burn implementation documentation.

6. Post-Burn Activities

Mop-up and patrol plan (describe activities, timeframes, and standards):

The CARX shall determine the frequency/intensity of on-site monitoring (patrol) or mop-up efforts during and after ignition based on current and predicted fire behavior in alignment to expected/predicted weather conditions, the time of year, the location of the burn, the proximity to private land or other high value resources.

Other post-burn activities (optional; include appendices for marked activities):

- ☐ Fire effects monitoring plan
- ☐ Project rehabilitation plan (including infrastructure, improvements, and land rehabilitation)
- ☐ Other (describe): _____

7. Notifications

Pre-Burn Notifications:

Adjacent Landowners

- ☐ Name: Klamath National Forest Phone: 530-468-5351
- ☐ Name: _____ Phone: _____
- ☐ Name: _____ Phone: _____
- ☐ Name: _____ Phone: _____
- ☐ Name: _____ Phone: _____
- ☐ Name: _____ Phone: _____

Air Quality Management District

- ☐ Name/Title: NE Air Alliance – Eric Olson Phone: 530-841-4025

Fire Agency Having Jurisdiction

- ☐ Name/Title: **CalFire SKU: Siskiyou Unit Chief Greg Roath** Phone: 530-598-2601

Other notifications may be required based on parameters outlined in the smoke management plan (e.g., schools and other sensitive receptors). Record additional notifications on separate page and include in appendices.

Day-of-Burn Notifications:

CAL FIRE Emergency Coordination Center (ECC):

- ☐ Name/Title: Yreka Interagency Coordinating Center Phone: 530-842-7066

Air Quality Management District

- ☐ Name/Title: NE Air Alliance – Eric Olson Phone: 530-841-4025

Other Fire Agency Having Jurisdiction (if applicable):

- ☐ Name/Title: _____ Phone: _____

Other (if applicable; e.g., law enforcement, adjacent landowners, etc.):

☐ Name/Agency: _____ Phone: _____
☐ Name/Agency: _____ Phone: _____
☐ Name/Agency: _____ Phone: _____

8. Wildfire Conversion Plan

Person designated to make declaration: Burn Boss

Designated Incident Commander in case of wildfire: Burn Boss

Person(s) to contact for declaration:

Name/Position: Yreka Dispatch _____ Phone/frequency: 530-841-4600

Name/Position: _____ Phone/frequency: _____

Name/Position: _____ Phone/frequency: _____

Size-up/reporting considerations:

- Rate of spread
- Fuel type
- Structure threat
- Potential acreage
- Current actions being taken

9. Risk Management Activities

Check boxes for risk management activities/plans attached to the prescribed fire plan:

- ☐ Contingency plan (required) – See attachment 1, BVHP-RX Contingency Plan
- ☐ Medical plan- See attachment 2, BVHP RX Safety Plan, and attachment 3 ICS 206 Medical Report Form (8-LINE)
- ☐ Communications plan-To be provided by Burn Boss/SPBA/SRWC. It is recommended that Burn Boss work with PBA and workforces to provide radios with programmed crew, command, and tactical frequencies at time of briefing, before test fire-radios are necessary for communications.
- ☐ Management Action Points (M.A.P.) – See attachment 4, BVHP RX Management Action Points
- ☐ Briefing checklist- See attachment 5 BVHP Briefing Checklist
- ☐ Safety plan (e.g., safety review, onsite assessment, 215A, etc.) – See Medical Plan above
- ☐ Other (describe): _____

10. Other Attachments

Check boxes for other pertinent attachments included with the prescribed fire plan:

- ☐ Project and area maps (required) – see 3 attached maps: 1-Vicinity, 2-Project Area, and 3-Hand Pile Units
- ☐ Go-no-go checklist (recommended) – Attachment 6_BVHP-GO/NO-GO checklist
- ☐ Other (describe): _____

Permits

Smoke Management Plan Burning Permit

James E. Smith, Siskiyou County Air Pollution Control Officer

ISSUED TO:	First Name	Last Name
	Chamna	Gilmore
Organization		
Scott River Watershed Council / Siskiyou PBA		
Street Name and Number	City	State Zip Code
514 N Hwy 3	Etna	CA 96027
Phone Number	Email:	
530-598-2733	charma@scottriver.org	

BURNING LOCATION:	Burn Address	City	
	Noyes Valley Callahan/Gazelle Rd	Callahan	
	Describe Location		
	Lat: 41.35522 Long: -122.76383		
	Township	Range	Section
	11N	8W	2

COUNTY OF SISKIYOU; STATE OF CALIFORNIA

Burning authorized by this permit hereby applies to: (Check applicable block below)

<input checked="" type="checkbox"/> Smoke Management Plan	Permit is valid during period 12/31/2024 to 2/28/2025
Burning Type: Hand Pile Burn	
Acres/Tons 40 Acres	

THIS PERMIT IS SUBJECT TO THE TERMS AND CONDITIONS OF USE AS INDICATED; PERMIT IS VOID IF PERMIT TERMS ARE VIOLATED.

1. Permittee must not burn during very hot and dry period when winds are strong enough that burning would be considered unsafe. (Example: wind keeps leaves in motion or extends a light flag or cloth)
2. The fire shall be: (a) attended at all times by at least one prudent and responsible person; (b) confined within cleared firebreaks or barriers adequate to prevent it from escaping control.
3. This permit does not relieve the permittee of any duty to use reasonable and ordinary care to prevent damage to the property of others or injury to persons as prescribed by law.
4. THIS PERMIT IS VOID DURING PERIODS WHEN BURNING IS PROHIBITED BY STATE LAW, LOCAL ORDINANCE, OR PROCLAMATION OF PUBLIC OFFICERS.
5. This permit is valid only on those days which are not prohibited by the State Air Resources Board pursuant to Section 41855 of the Health and Safety Code or by the local air pollution control district.
6. Before burning call 842-8123 or 866-652-2876 for burn day information.
For Air Pollution Control Call 530-841-4030 office line; Contact 24 hr prior to burning

Additional Terms

All Burning under this permit must be conducted according to the approved SMP

I own or legally control the above described land. I agree to comply with all fire laws, ordinances, and regulations. I further agree to comply with specific terms of this permit.

SIGNED: Chamna Gilmore DATE: 31/12/202
Chamna Gilmore (Dec 31, 2024 16:49 PST)

Issued By Darin Weeks DATE: 12/31/2024
Title: Air Pollution Specialist



COUNTY OF SISKIYOU

AIR POLLUTION CONTROL DISTRICT

525 SOUTH FOOTHILL DRIVE
YREKA, CALIFORNIA 96097-3090
PHONE: (530) 841-4025
FAX: (530) 842-6690

JAMES E. SMITH
AIR POLLUTION CONTROL OFFICER

BURN PERMITS ARE SUBJECT TO THE TERMS AND CONDITIONS OF USE AS INDICATED; PERMITS ARE VOID IF PERMIT TERMS ARE VIOLATED.

THIS PERMIT IS VOID DURING PERIODS WHEN BURNING IS PROHIBITED BY STATE LAW, LOCAL ORDINANCE, OR BY PROCLAMATION OF PUBLIC OFFICERS.

1. Burn permit is not valid unless there is a signed copy on file with the Siskiyou County Air Pollution Control District (APCD). Burning without a valid burn permit will result in a fine of \$250.
2. This permit is valid only on those days which are not prohibited by the State Air Resources Board pursuant to Section 41855 of the Health and Safety Code or by the local Air Pollution Control District. Burning on a No Burn day will result in a fine of \$250.
3. Permittee must not burn during very hot and dry period when winds are strong enough that burning would be considered unsafe. (Example: wind keeps leaves in motion or extends a light flag or cloth).
4. The fire shall be: (a) attended at all times by at least one prudent and responsible person; (b) confined within cleared firebreaks or barriers adequate to prevent it from escaping control.
5. This permit does not relieve the permittee of any duty to use reasonable and ordinary care to prevent damage to the property of others or injury to persons as prescribed by law.
6. The permittee shall follow the allowable burn hours at all times. All residential burn piles are to be "dead out" at the end of allowable burn hours.
7. The permittee shall make the best effort possible to ensure that large piles do not smolder overnight.
8. The permittee shall burn only allowable burn materials: clean, dry, wood waste and vegetative material originating from the premises. The burning of material hauled in from another location is strictly prohibited. Burning material from off premises will result in a \$250 fine.
9. The burning of demolition debris is prohibited. Burning prohibited material will result in a \$500 fine.
10. The Right of Entry as stipulated in California Health and Safety Code Section 41510, of Division 26, shall apply at all times. This means District staff may inspect burn pile(s) before, during, or after burning.

I hereby certify that I have read and understand the above rules and conditions. I further agree to comply with the specific terms of this permit:

Charinna Gilmore
Charinna Gilmore (Dec 31, 2024 16:49 PST)
Signed

31/12/2024
Date

2024-Beaver Valley Headwaters Preserve Pile Burn Permit

Final Audit Report

2025-01-01

Created:	2025-01-01
By:	Darin Weeks (dweeks@co.siskiyou.ca.us)
Status:	Signed
Transaction ID:	CBJCHBCAABAAcnK16ofTmiYZnkpLtmVIsRomxLyoxdMB

"2024-Beaver Valley Headwaters Preserve Pile Burn Permit" History

-  Document created by Darin Weeks (dweeks@co.siskiyou.ca.us)
2025-01-01 - 0:45:36 AM GMT
-  Document emailed to Charnna Gilmore (charnna@scottriver.org) for signature
2025-01-01 - 0:45:40 AM GMT
-  Email viewed by Charnna Gilmore (charnna@scottriver.org)
2025-01-01 - 0:48:54 AM GMT
-  Document e-signed by Charnna Gilmore (charnna@scottriver.org)
Signature Date: 2025-01-01 - 0:49:27 AM GMT - Time Source: server
-  Agreement completed.
2025-01-01 - 0:49:27 AM GMT

2024-Beaver Valley Headwaters Preserve Pile Burn

General

General Information

Permittee Name*	Charnna Gilmore
Organization*	Siskiyou Prescribed Burn Association
Fire Manager/Burn Boss*	Eric Darragg
Phone*	(530) 680-6849 Email: alexis@scottriver.org
Project Number:	
Legal Location*:	Noyes Valley, Callahan/Gazelle Road
Latitude**:	41.35522
Longitude**:	-122.76383
Air Pollution Control District*:	Siskiyou County APCD
Indicate the category which best describes the prescribed burn project:*	Forest Management

Project

Project Information

Desired Season of Project*	N/A
Acceptable Alternative:	N/A
Duration of burn (days)*	Ignition: Burndown: Total:

Emissions

Emissions Estimates

Total estimated particulate matter:*	9.016 (PM 2.5 or PM 10)
Estimated Tons/Acre by Vegetation Type:	Tons per acre not found.

Piles

Pile/Broadcast Units

Burn Units for 2024-Beaver Valley Headwaters Preserve Pile Burn

Unit Name or Number	Sub-unit Name/Number**	Unit Type	Acres	Legal Location	Latitude*	Longitude*	Elevation	Wind Prescription	Delete?
2024-									

Beaver Valley Headwaters Preserve Pile Burn				Noyes Valley, Callahan/Gazelle Road	41.35522	-122.76383	-999	
---	--	--	--	-------------------------------------	----------	------------	------	--

Smoke

Smoke Dispersal Surveillance and Monitoring

Smoke dispersal surveillance and monitoring will be accomplished by the following methods when indicated. If the project is conducted near smoke sensitive areas or if the smoke from the project may impact smoke sensitive areas, smoke monitoring is required on all projects over 250 acres/day and on those projects that would continue burning or producing smoke overnight or as required by the Air District. It is recommended that the Burner obtain a current Smoke Transport and Stability Forecast from the Redding Fire Weather Center. The Internet web address is <http://gacc.nifc.gov/oncc/predictive/weather/index.htm>. A test burn shall be conducted on a small portion of the project area prior to project implementation. All weather and surveillance records shall be filed in the project folder and be available for Air District Review upon request.

Procedure (check box if used)*	Description (if not used leave blank)*
<input checked="" type="checkbox"/> Test Fire	Will conduct a test fire prior to lighting unit
<input checked="" type="checkbox"/> Weather Observations (RAWS, etc)	Will take locate weather before and during all burning activities
Weather Forecast(s)	
<input checked="" type="checkbox"/> Visual Monitoring	Will conduct visual monitoring in and around unit
Other (explain)	
Method/Location of Visual Monitoring*	Both on the ground walking the unit and visual inspections from existing private and county roads
Interval Between Dispersal Monitoring Observations*	

SSA

Identification of Smoke Sensitive Areas (SSAs)

Smoke Sensitive Areas (SSAs) include, but are not limited to the following: population centers (towns, villages, home sites, subdivisions), hospitals, schools, daycare centers, nursing homes, shopping centers, populated recreation areas, well attended public events, major roads, airports, Class I Areas, and may include campgrounds and trails extensively used by recreationalists.

A. Likely to impact Class I Area? (federal Clean Air Act, Sec.169A)	N	
B. Likely to impact another AQMD or State (Oregon or Nevada)?	N	
If YES, indicate which city/cities:		
C. Likely to impact Smoke Sensitive Areas? (List the name and distance/direction from burn below)		
N/A		
D. Does the location of the project lie within more than one AQMD?		
	Butte County AQMD	Shasta County AQMD
	Lassen County APCD	Siskiyou County APCD
If yes, identify other AQMD(s) (limit 2):		

	Modoc County APCD Northern Sierra AQMD	Tehama County APCD
E. Previous history of adverse smoke impacts? (does not imply disapproval of project)	N	
If yes, list examples:		

Mitigations

Mitigations

The following mitigation measures shall be implemented:

A	Limit burning to 20 acres per day
B	
C	Ignite between 0800 and 1700 hours. (Use military time)
D	Test Burn
E	Additional/other mitigation measures:
F	<p>If YES on VI. B.:</p> <p>a. Indicate what maximum mixing heights that would be used when burning:</p> <p>b. The use of a "test burn" prior to full ignition, to verify the smoke transport direction</p>

Alternatives

Evaluation of Alternatives to Burning

Projects, which have met applicable National Environmental Policy Act (NEPA) or California Environmental Quality Act (CEQA) requirements, will be considered to have complied with this provision. Either a copy of the applicable section of the environmental document can be attached to this SMP or a sufficiently detailed narrative of how alternatives to burning were carried out in order to reduce fuel loads and emissions.

Cal. Code Regs. tit. 14 § 1038, approved and validated by CALFIRE: (C) All Slash shall be lopped, removed, chipped, piled and burned, or otherwise treated to achieve a maximum post-harvest depth of eighteen (18) inches above the ground within forty-five (45) days from the start of Timber Operations except for the burning of piles, which shall be accomplished not later than April 1 of the year following their creation, or for piles created on or after September 1, not later than April 1 of the second year following creation. Treatment of surface fuels by burning shall be exempt from the one-year time limitations on Timber Operations described under 14 CCR § 1038.

Contingencies

Contingencies

The following actions shall be taken if smoke adversely impacts smoke sensitive areas. Adequate resources or assets will be provided for the items checked below:

<input type="checkbox"/>	Halt ignition, except as needed to maintain control of fire
--------------------------	---

	Allow fire to burn to contingency control lines
	Suppress fire
	Begin immediate mop up
	Begin mop up within hours of problem identification
	Complete mop up within hours of initiation
	Discontinue mop up if favorable conditions return
X	Other (explain) N/A

Contact

Public Notification and Neighboring Burner Coordination

All of the actions checked below will be taken in order to advise the public and known sensitive receptors that prescribed burning will be conducted in their vicinity and to assure the public that measures will be taken to minimize the smoke impacts.

A. Type of Public Notification	
Method (check if used)*	Describe Activity and Timing*
Radio	
Newspaper	
Posters/Flyers	
X Telephone	Text neighboring landowners about the burning activities the day before burning
X Email	Email landowners about burning activities the day before burn
Website Posting	
Door-to-Door	
X Signage	Signage out on county road
X Social Media	Burn information will be posted to local FB site
Press Release	
Other (explain)	

B. If potential impacts were identified in Section VI, additional notifications may be required within the potentially impacted area. If required, describe supplemental notifications that will be undertaken to mitigate adverse impacts:

N/A

C. Neighboring Burner Coordination

- A minimum of 1 day prior to anticipated ignition, all burners shall forward to the NEAA e-mail list the following information: (This will be done ASAP when a Wildfire managed for resource benefits is expected to exceed 10 acres in size.)
 - Name of project
 - Agency conducting burn with contact info
 - Legal location, county, and landmark of burn
 - Type of burn
 - Total acreage / estimated acres per day
 - When the burn is planned
 - Duration of ignition given in days
 - Estimated direction of smoke travel
 - Communities or Smoke Sensitive Areas that could be impacted (if any). Smoke Sensitive Areas are defined in Section VI of this SMP.
- Participate in the 1300 Burn Conference Call a minimum of 1 day prior to burning with daily representation during the burn.
 - [Join via Microsoft Teams](#)
 - Phone in #: (916) 538-5111

- o Passcode: 452736566#
- o Phone Conference ID: 452 736 566#

Maps

Maps and Other Documents

A map must be attached to this Smoke Management Plan that identifies nearby smoke sensitive areas, burn unit perimeters, available interior control lines (if suitable for this project), and areas subject to smoke inversions due to the burn project. Also, the map must indicate estimated path of unacceptable smoke transport. (map opens in new tab)

View units on Google Maps: [Google Map](#)



History**Smoke Management Plan History**

Submitted by:	Alexis Robertson
Date Submitted:	Tue Dec 24, 2024 @ 6:58 AM

General Burn Permit

Permit Number: 241029130226Commarto




State of California
Department of Forestry and Fire Protection
LE-5 (Rev 10/23) online

Permittee					
Name	Sam Commarto				
Address	PO Box 86				
City	Etna	State	CA	Zip Code	96027
Phone	(530) 598-6640	Email	sam@crosscontourfire.com		
Burn Location					
Address	APN 023-410-120, 023-400-220, 031-210-010, 031-210-100, 031-210-050				
City	Callahan	State	CA	Zip Code	96014
County	Siskiyou County			Battalion	1
Section	33, T41N., R08W				
Activity					
• Vegetation in small 4' x 4' piles					
This permit is subject to the following terms and conditions					
This permit is valid during		11/09/2024 - 12/31/2024			
Burning shall be confined to hours		7:00am - 7:00pm			
Before Burning, call the Air District		(530) 842-8123			
Before Burning, call CAL FIRE		(530) 842-7066			
Before burning, call the Fire Station		(530) 468-2696			
1. No burning during very hot and dry periods when winds are strong enough that burning would be considered unsafe (example: wind keeps leaves in motion or extends a light flag or cloth).					
2. The fire shall be: (a) attended at all times by at least one prudent and responsible person; (b) confined within cleared firebreaks or control lines adequate to prevent it from escaping control; and (c) maintained and in control at all times.					
3. To prevent escape, the area around the pile or burn barrel (if allowed by the air district) must be maintained free and clear of all flammable material for a minimum of 10 feet, or larger if site-specific conditions warrant it. All openings must be screened with nonflammable material with holes not larger than ¼ inch. Burn barrel use not authorized.					
4. This permit does not relieve the Permittee from using reasonable and prudent care to prevent damage to the property of others or injury to a person as prescribed by law. If the Permittee burns outside the terms and conditions of the permit or a fire escapes control and/or requires suppression action, the Permittee may be held liable for suppression costs.					
5. This permit does not relieve the permittee of any legal responsibility for the safe use of fire or allow burning in violation of any State law, county ordinance, or local regulations restricting or regulating the use of fire.					
6. Burn dry vegetation unless otherwise permitted. It is illegal to burn garbage, including treated lumber or plywood.					
7. The responsible person shall be in possession of the permit at all times.					
8. This permit is valid only on "Permissive Burn Days" as determined by the local Air District, pursuant to its authority under Health and Safety Code 41855 and local Air District rules. For more information, visit the California Air Districts.					
9. This permit does not relieve the Permittee of any legal responsibility for the safe use of fire or allow burning in violation of any State law, county ordinance, or local regulations restricting or regulating the use of fire.					
Weather Conditions					
Max Wind Speed (MPH): 10		Max Temperature (Dry Bulb): 90		Min Humidity (RH): 20	
Acceptable Wind Direction: NW,N,NE,E,SE,S,SW,W					
Special Instructions					
Must follow all conditions listed above (1-7). Must maintain control of fire at all times. Must validate burn day status and burn hours at Siskiyou County Air Pollution (530 842-8123). Call CALFIRE prior to burning (530) 842-7066. It's illegal to burn garbage, including treated lumber or Plywood. The permit shall be held in possession by lead person conducting burn or readily accessible on-site. The permit SHALL be provided immediately upon request by any Peace Officer, Air Pollution Control representative, CAL FIRE representative, Forest Service representative or local fire district representative. Not providing permit immediately upon request shall make the permit null and void.					

• [Ready for Wildfire](#) • [Campfire Permits](#) • [Defensible Space](#) • [California Air Resources Board](#) • [Current Burn Status](#) • [PFIRS](#)

General Burn Permit

Permit Number: 241029130226Commarto

CAL FIRE Inspector	
Keith Cummings, Chief Officer	Date: 10/30/2024
Permittee's Signature	
I own or legally control the above described land or have authorization from the owner(s) to sign. I agree to comply with all fire laws, ordinances, and regulations. I further agree to comply with specific terms of this permit.	
	

**VIOLATIONS OF ANY BURNING PERMIT TERMS ARE A VIOLATION OF STATE LAW RENDERS THE PERMIT NULL AND VOID
PERMIT IS VOID DURING PERIODS WHEN BURNING IS PROHIBITED BY STAE LAW, LOCAL ORDINANCE, OR PROCLAMATION OF PUBLIC
OFFICERS**

(Public Resources Code 4421, 4422, 4423 and 4425)

Health & Safety Code 13009 states that persons who lose control of a permitted burn may be held liable for suppression costs.

PLEASE READ THE ATTACHMENTS. IT CONTAINS INFORMATION ON THE LAWS AND RULES RELATING TO FIRE

• [Ready for Wildfire](#) • [Campfire Permits](#) • [Defensible Space](#) • [California Air Resources Board](#) • [Current Burn Status](#) • [PFIRS](#)

**ATTENTION, PERMITTEE!
BE FIRE AND SMOKE SAFE!**

THE FOLLOWING INFORMATION IS CALLED TO YOUR ATTENTION AND IS FOR YOUR PROTECTION

Air District Regulations establish conditions when vegetation burning, for which this permit is issued, may be allowed. Permittees should only burn on "BURN DAYS." Burn only vegetation, unless otherwise permitted, for which this permit is issued.

Burn violations of Air District Regulations observed by forest or fire protection officers will be promptly reported. CAL FIRE forest and fire protection officers enforce fire law violations to prevent the occurrence of uncontrolled fire and violations from which an uncontrolled fire results.

You are cautioned that reasonable prudence in burning requires careful consideration of time, weather, place of starting the fire, size of the area and amount of vegetation to be burned, location and condition of firebreaks or control lines, number of responsible persons required for control, and adequate firefighting tools. It is essential to understand that:

1. State law is to prevent fires or control them to avoid general and widespread disastrous consequences from wildfire. It is not the object of legislation to protect persons from their own carelessness but to protect the public from such carelessness.
It is required by law that you use fire in such a manner as to minimize the possibility of damage to others. The law requires the application of common sense by prudent and responsible persons using fire that does not escape control and damage the property of or injury to others.
2. Uncontrolled fires are dangerous and can be expensive to suppress. A person shall not set fire or cause fire to be set to a forest, brush, or other flammable material that is on land that is not the person's own land or under the person's legal control without the permission of the owner, lessee, or owner's agent or lessee of the land. A person shall not do either of the following:
 - (a) Willfully or knowingly allow fire to burn uncontrolled on land that the person owns or controls or to escape to the lands of any person other than that of the owner.
 - (b) Allow any fire kindled or attended by the person to escape from the person's control or to spread to the land of any person other than from the land from which the fire originated.
3. During the burning authorized by this permit, forest or fire officers are instructed to immediately take whatever action is necessary to bring under control and suppress the fire if they find any of the following conditions existing:

That, because of the violation of the terms of this permit, the fire appears to be obviously out of control, or that it is burning with such magnitude it cannot be controlled by the facilities and personnel at hand, or that the fire will obviously escape firebreaks or control lines established, or that the fire has already escaped such control lines and is beyond the ability of the permittee to effect control.
4. The California Department of Forestry and Fire Protection (CAL FIRE) is not a volunteer when it takes action to suppress a fire burning uncontrolled on lands in this State. It is compelled to take such action to protect the State's interests. When the California Department of Forestry and Fire Protection takes action to control a fire that is burning uncontrolled due to a breach of the conditions of this permit, the California Department of Forestry and Fire Protection is entitled to reimbursement for the public funds expended.
5. The CAL FIRE station identified within your area is: SKU, (530) 842-3516

Protect yourself and your family by limiting smoke exposure when burning

Burning vegetation produces smoke containing fine particles and gases that can be easily inhaled into the respiratory system. Children, elders, pregnant women, and those with pre-existing health conditions are most at risk for smoke health impacts.

Permittees should not burn on days of unsafe weather conditions

It is unsafe to burn during very hot, dry periods when winds are strong enough to keep leaves and small twigs in constant motion or to extend a light flag or cloth.

VIOLATIONS OF ANY BURNING PERMIT TERMS ARE A VIOLATION OF STATE LAW

(Public Resources Code 4421, 4422, 4423 and 4425)

Health & Safety Code 13009 states that persons who lose control of a permitted burn may be liable for suppression costs.

• [Ready for Wildfire](#) • [Campfire Permits](#) • [Defensible Space](#) • [California Air Resources Board](#) • [Current Burn Status](#) • [PFIRS](#)

General Burn Permit

Permit Number: 241219183230Gilmore



State of California
Department of Forestry and Fire Protection
LE-5 (Rev 10/23) online

Permittee					
Name	Charnna Gilmore				
Address	PO Box 355				
City	Etna	State	CA	Zip Code	96027
Phone	(530) 598-2733	Email	charnna@scottriver.org		
Burn Location					
APN	APN 023-410-120, 023-400-220, 031-210-010, 031-210-100, 031-210-050				
City	Callahan	State	CA	Zip Code	96014
County	Siskiyou County			Battalion	1
Section	34, T41N., R08W				
Activity					
• Vegetation in small 4' x 4' piles					
This permit is subject to the following terms and conditions					
This permit is valid during	12/20/2024 - 03/31/2025				
Burning shall be confined to hours	0700 - 0700				
Before burning, call the Air District	(530) 842-8123				
Before burning, call CAL FIRE	(530) 842-7066				
Before burning, call the Fire Station	(530) 468-2696				
1. No burning during very hot and dry periods when winds are strong enough that burning would be considered unsafe (example: wind keeps leaves in motion or extends a light flag or cloth).					
2. The fire shall be: (a) attended at all times by at least one prudent and responsible person; (b) confined within cleared firebreaks or control lines adequate to prevent it from escaping control; and (c) maintained and in control at all times.					
3. To prevent escape, the area around the pile or burn barrel (if allowed by the air district) must be maintained free and clear of all flammable material for a minimum of 10 feet, or larger if site-specific conditions warrant it. All openings must be screened with nonflammable material with holes not larger than ¼ inch. Burn barrel use not authorized.					
4. This permit does not relieve the Permittee from using reasonable and prudent care to prevent damage to the property of others or injury to a person as prescribed by law. If the Permittee burns outside the terms and conditions of the permit or a fire escapes control and/or requires suppression action, the Permittee may be held liable for suppression costs.					
5. This permit does not relieve the permittee of any legal responsibility for the safe use of fire or allow burning in violation of any State law, county ordinance, or local regulations restricting or regulating the use of fire.					
6. Burn dry vegetation unless otherwise permitted. It is illegal to burn garbage, including treated lumber or plywood.					
7. The responsible person shall be in possession of the permit at all times.					
8. This permit is valid only on "Permissive Burn Days" as determined by the local Air District, pursuant to its authority under Health and Safety Code 41855 and local Air District rules. For more information, visit the California Air Districts.					
9. This permit does not relieve the Permittee of any legal responsibility for the safe use of fire or allow burning in violation of any State law, county ordinance, or local regulations restricting or regulating the use of fire.					
Weather Conditions					
Max Wind Speed (MPH): 10	Max Temperature (Dry Bulb): 90		Min Humidity (RH): 20		
Acceptable Wind Direction: NW,N,NE,E,SE,S,SW,W					
Special Instructions					
Must follow all conditions listed above (1-7). Must maintain control of fire at all times. Must validate burn day status and burn hours at Siskiyou County Air Pollution (530 842-8123). Call CALFIRE prior to burning (530) 842-7066. It's illegal to burn					

• [Ready for Wildfire](#) • [Campfire Permits](#) • [Defensible Space](#) • [California Air Resources Board](#) • [Current Burn Status](#) • [PFIRS](#)

General Burn Permit

Permit Number: 241219183230Gilmore

garbage, including treated lumber or Plywood. The permit shall be held in possession by lead person conducting burn or readily accessible on-site. The permit SHALL be provided immediately upon request by any Peace Officer, Air Pollution Control representative, CAL FIRE representative, Forest Service representative or local fire district representative. Not providing permit immediately upon request shall make the permit null and void.

CAL FIRE Inspector

Seth Pindell, Chief Officer

Date: 12/20/2024

Permittee's Signature

I own or legally control the above described land or have authorization from the owner(s) to sign. I agree to comply with all fire laws, ordinances, and regulations. I further agree to comply with specific terms of this permit.



VIOLATIONS OF ANY BURNING PERMIT TERMS ARE A VIOLATION OF STATE LAW RENDERS THE PERMIT NULL AND VOID
PERMIT IS VOID DURING PERIODS WHEN BURNING IS PROHIBITED BY STATE LAW, LOCAL ORDINANCE, OR PROCLAMATION OF PUBLIC OFFICERS
(Public Resources Code 4421, 4422, 4423 and 4425)

Health & Safety Code 13009 states that persons who lose control of a permitted burn may be held liable for suppression costs.

PLEASE READ THE ATTACHMENTS. IT CONTAINS INFORMATION ON THE LAWS AND RULES RELATING TO FIRE

• [Ready for Wildfire](#) • [Campfire Permits](#) • [Defensible Space](#) • [California Air Resources Board](#) • [Current Burn Status](#) • [PFIRS](#)

ATTENTION, PERMITTEE!

BE FIRE AND SMOKE SAFE!

THE FOLLOWING INFORMATION IS CALLED TO YOUR ATTENTION AND IS FOR YOUR PROTECTION

Air District Regulations establish conditions when vegetation burning, for which this permit is issued, may be allowed. Permittees should only burn on "BURN DAYS." Burn only vegetation, unless otherwise permitted, for which this permit is issued.

Burn violations of Air District Regulations observed by forest or fire protection officers will be promptly reported. CAL FIRE forest and fire protection officers enforce fire law violations to prevent the occurrence of uncontrolled fire and violations from which an uncontrolled fire results.

You are cautioned that reasonable prudence in burning requires careful consideration of time, weather, place of starting the fire, size of the area and amount of vegetation to be burned, location and condition of firebreaks or control lines, number of responsible persons required for control, and adequate firefighting tools. It is essential to understand that:

1. State law is to prevent fires or control them to avoid general and widespread disastrous consequences from wildfire. It is not the object of legislation to protect persons from their own carelessness but to protect the public from such carelessness.
It is required by law that you use fire in such a manner as to minimize the possibility of damage to others. The law requires the application of common sense by prudent and responsible persons using fire that does not escape control and damage the property of or injury to others.
2. Uncontrolled fires are dangerous and can be expensive to suppress. A person shall not set fire or cause fire to be set to a forest, brush, or other flammable material that is on land that is not the person's own land or under the person's legal control without the permission of the owner, lessee, or owner's agent or lessee of the land. A person shall not do either of the following:
 - (a) Willfully or knowingly allow fire to burn uncontrolled on land that the person owns or controls or to escape to the lands of any person other than that of the owner.
 - (b) Allow any fire kindled or attended by the person to escape from the person's control or to spread to the land of any person other than from the land from which the fire originated.
3. During the burning authorized by this permit, forest or fire officers are instructed to immediately take whatever action is necessary to bring under control and suppress the fire if they find any of the following conditions existing:

That, because of the violation of the terms of this permit, the fire appears to be obviously out of control, or that it is burning with such magnitude it cannot be controlled by the facilities and personnel at hand, or that the fire will obviously escape firebreaks or control lines established, or that the fire has already escaped such control lines and is beyond the ability of the permittee to effect control.
4. The California Department of Forestry and Fire Protection (CAL FIRE) is not a volunteer when it takes action to suppress a fire burning uncontrolled on lands in this State. It is compelled to take such action to protect the State's interests. When the California Department of Forestry and Fire Protection takes action to control a fire that is burning uncontrolled due to a breach of the conditions of this permit, the California Department of Forestry and Fire Protection is entitled to reimbursement for the public funds expended.
5. The CAL FIRE station identified within your area is: SKU, (530) 842-3516

Protect yourself and your family by limiting smoke exposure when burning

Burning vegetation produces smoke containing fine particles and gases that can be easily inhaled into the respiratory system. Children, elders, pregnant women, and those with pre-existing health conditions are most at risk for smoke health impacts.

Permittees should not burn on days of unsafe weather conditions

It is unsafe to burn during very hot, dry periods when winds are strong enough to keep leaves and small twigs in constant motion or to extend a light flag or cloth.

• [Ready for Wildfire](#) • [Campfire Permits](#) • [Defensible Space](#) • [California Air Resources Board](#) • [Current Burn Status](#) • [PFIRS](#)

VIOLATIONS OF ANY BURNING PERMIT TERMS ARE A VIOLATION OF STATE LAW

(Public Resources Code 4421, 4422, 4423 and 4425)

Health & Safety Code 13009 states that persons who lose control of a permitted burn may be liable for suppression costs.

Landowner Access Agreement

Attachment B

Addendum to Cooperative Agreements with the U.S. Fish and Wildlife Service for Prescribed Fire on Private Lands

The proper use of prescribed fire management is one of the most efficient and cost-effective means for improving wildlife habitat in fire dependent forested and grassland landscapes. In addition to wildlife benefits, prescribed fire reduces the threat and severity of wildfires by reducing the amount of vegetation available to burn. In utilizing prescribed fire management funded under this cooperative agreement, the agreement recipient understands and agrees that:

Prescribed fire projects on private lands typically fall under the jurisdiction of State and/or local agencies/entities with fire management authority and responsibility.

Although the non-Federal entity carrying out the prescribed fire planning and implementation is not specifically required to comply with the Federal National Wildfire Coordinating Group (NWCG) standards, unless the U.S. Fish and Wildlife Service (Service) has substantial involvement in the prescribed fire planning and implementation, the non-Federal entity must comply with all applicable State and local laws and regulations pertaining to such prescribed fires.

The Service's obligation under this cooperative agreement for prescribed fire is limited to project collaboration in accordance with their Federal wildland fire qualifications with those responsible for planning and implementing the prescribed fire. The Service shall not be responsible or liable for any damage to property or any injury to persons that may arise from, or be incident to, performance or compliance with this Agreement.

The recipient must indemnify, save, and hold harmless the Department of the Interior, the Service, and its agents and employees from and against any and all liabilities, obligations, losses, damages, judgments, claims, actions, suits, penalties, fines, costs, and expenses (including reasonable attorneys' fees and experts' fees) of any kind and nature arising out of acts or omissions of the grantee, its employees, agents, and contractors (including any contractors' subcontractors). This includes injury to people (including injury resulting in death) and damage to property in connection with activities funded under this agreement.

By signing this addendum to the cooperative agreement, the recipient certifies that they understand and agrees to be bound by the terms contained herein.

	11/6/2023
_____ Agreement Recipient	Date
Frazier Haney- Executive Director	

	11/6/2023
_____ Agreement Recipient	Date
Jennifer Francis- CFO	